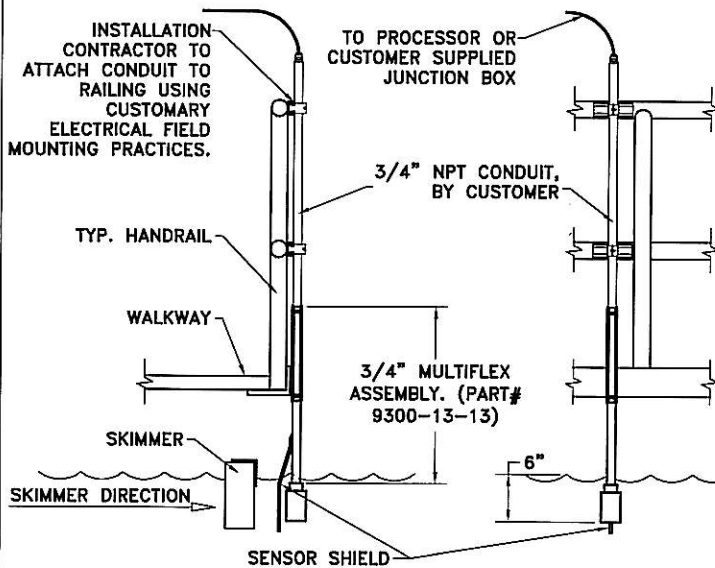
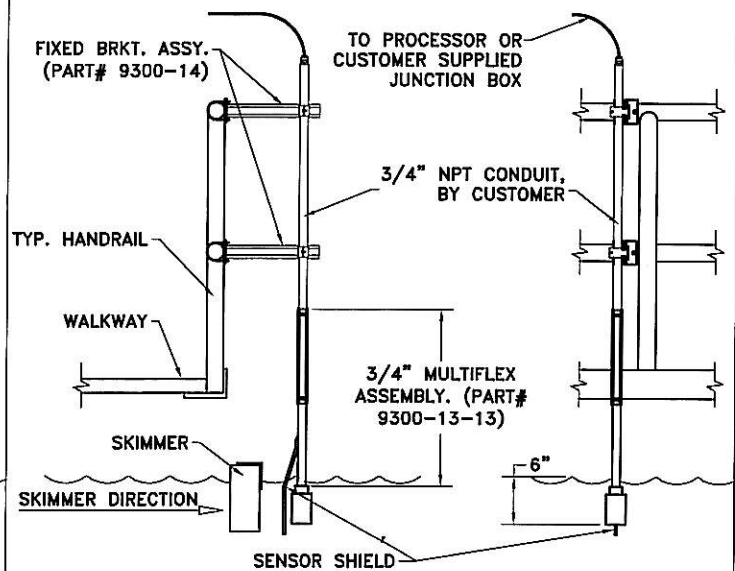


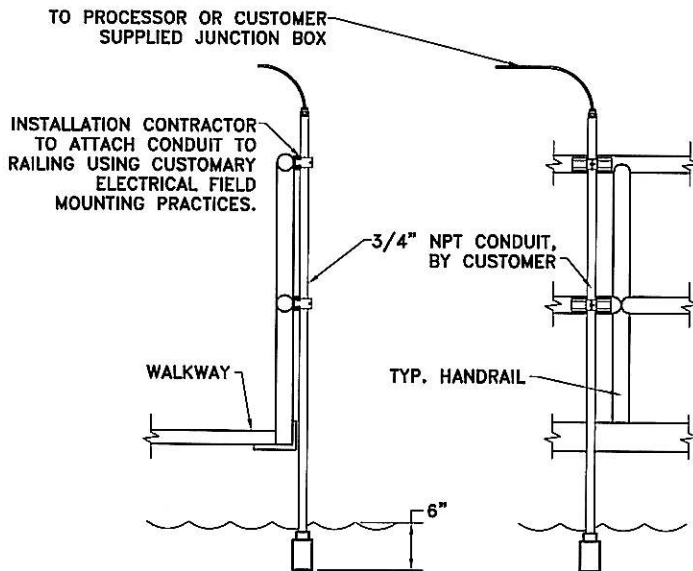
### SENSOR FLEX MOUNT (FOR USE WITH SURFACE SKIMMERS)



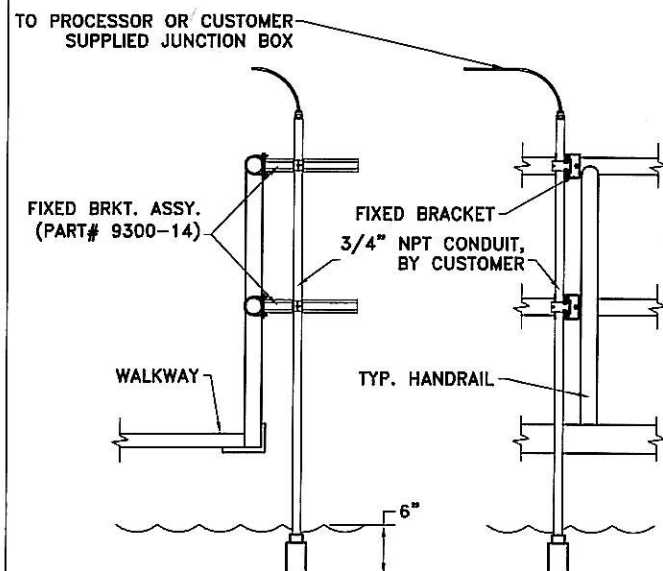
### SENSOR FLEX MOUNT WITH FIXED BRACKET EXTENSIONS (FOR USE WITH SURFACE SKIMMERS)



### SENSOR STATIONARY MOUNT



### SENSOR STATIONARY MOUNT WITH FIXED BRACKET EXTENSIONS



#### SENSOR INSTALLATION NOTES:

1. POSITION SENSOR SHIELD SUCH THAT IT MAKES FIRST CONTACT WITH SURFACE SKIMMER. ENSURE THAT THE SKIMMER STRUCTURE DOES NOT CONTACT THE MULTIFLEX ASSEMBLY ABOVE THE SENSOR SHIELD.
2. POSITION SENSOR SO THAT IT IS FULLY SUBMERGED UNDER WATER (TYPICAL 6" BELOW SURFACE).
3. SEE DRAWING # 9300-14-03 FOR FIXED BRACKET HANDRAIL MOUNTING OPTIONS.
4. FOR STAINLESS STEEL FIXED BRACKETS ORDER KIT # 9300-14-01. FOR ALUMINUM FIXED BRACKETS ORDER KIT # 9300-14-02

THIS DRAWING IS THE PROPERTY OF  
**Entech Design, Inc.**  
AND IS LOANED UPON CONDITION THAT IT IS NOT TO BE  
REPRODUCED OR COPIED, IN WHOLE OR IN PART, OR USED  
FOR FURNISHING INFORMATION TO OTHERS OR FOR ANY  
OTHER PURPOSE DETRIMENTAL TO THE INTEREST OF E.D.I.  
AND WILL BE RETURNED UPON REQUEST.

<b>Entech Design, Inc.</b> <small>303 E. LOCUST AVENUE, 7TH FLOOR</small>		SCALE: N/A	DRAWN BY: TODD McCLENDON
		DATE: 12-12-08	
		ECHO SMART SENSOR MOUNTING ARRANGEMENTS	
		ECHO SMART	DRAWING NO. 9300-210
REVISIONS			